



# Homed:In

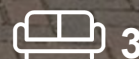
18 Station Road, Southwater, RH13 9HQ



Worthing Road

Southwater, Horsham, RH13 9EY

£580,000



# Worthing Road



## Description

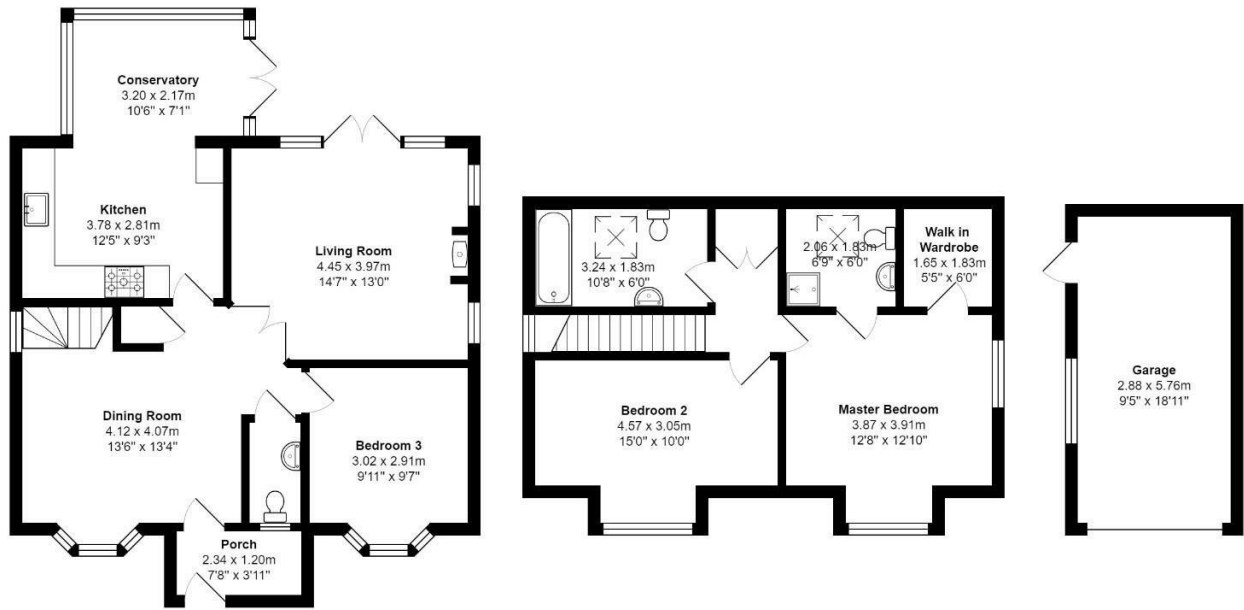
A modern 2001 detached home, with a pleasing downstairs floorplan and 3 double bedrooms.

- West Facing Not Overlooked Plot
- Master Bedroom En-suite
- Conservatory Extension
- Modernly Finished Interior
- Schedule Your Viewing Today
- Fantastic Central Location Beside Country Park
- Expansive Downstairs Floorplan
- Driveway for 3 Vehicles
- VIDEO TOUR IN TAB





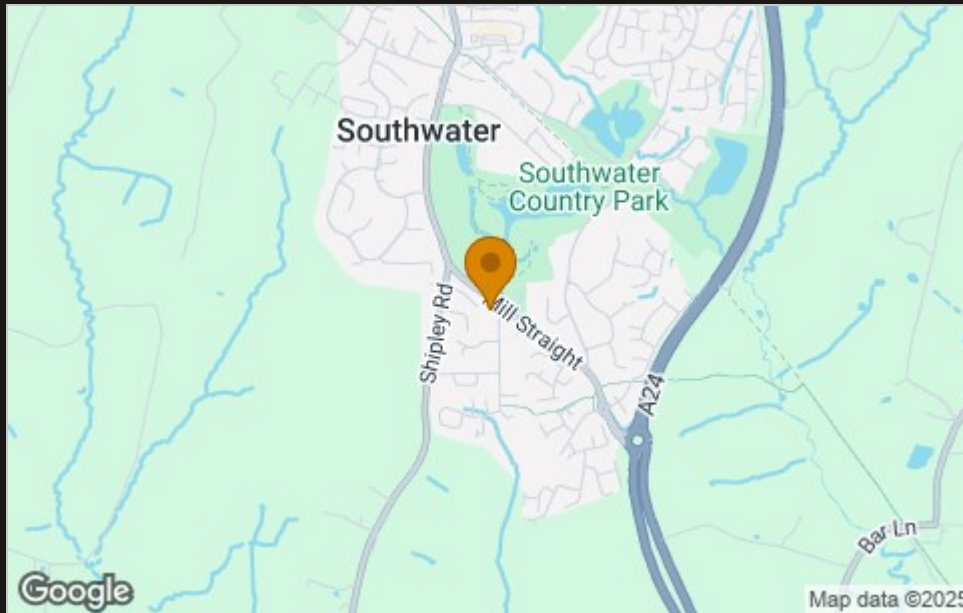
## Floor Plan



Total Area: 134.2 m<sup>2</sup> ... 1444 ft<sup>2</sup> (Incl Garage)

All measurements are approximate and for display purposes only.  
Copyright 2024. All rights reserved.

## Area Map



## Viewing

Please contact our Horsham Office on 01403 597595 if you wish to arrange a viewing appointment for this property or require further information.

These particulars, whilst believed to be accurate are set out as a general outline only for guidance and do not constitute any part of an offer or contract. Intending purchasers should not rely on them as statements of representation of fact, but must satisfy themselves by inspection or otherwise as to their accuracy. No person in this firm's employment has the authority to make or give any representation or warranty in respect of the property.

To **GET A FREE VALUATION** Call us on: **01403 597595**  
or email us at: [info@homedin.co.uk](mailto:info@homedin.co.uk)

## Energy Efficiency Graph

